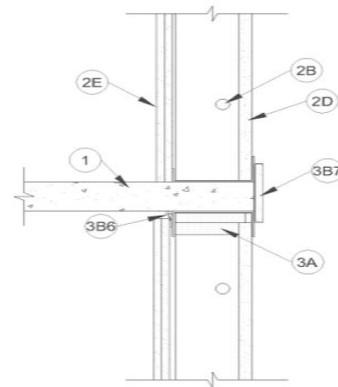
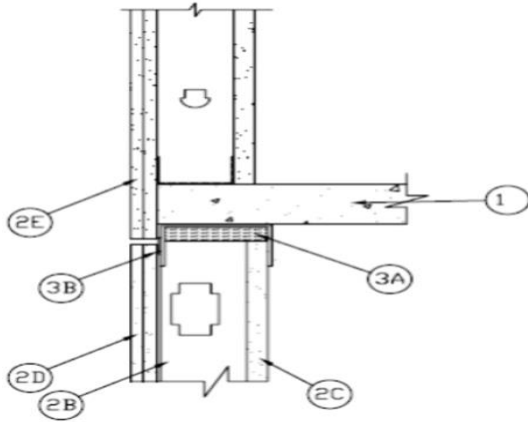


SYSTEM NO. HW-D-0621

CAN/ULC S115
Assembly Ratings - 1 and 2 Hr

Nominal Joint Width - See Chart, Section 3
Class II or III Movement Capabilities - See Chart, Section 3

L Rating at Ambient - 3.33 L/s/m
L Rating at 204°C - L/s/m



1. **Floor Assembly** - Min 4 1/2 in. (114 mm) thick steel reinforced lightweight or normal weight (100-150 pcf or 1600-2400 kg/m³) structural concrete. Floor may also be constructed by any min 6 in. (152 mm) thick UL Classified hollow-core **Precast Concrete Units***. See **Precast Concrete Units** (CFTV) category in the Fire Resistance Directory for names manufacturers.

The hourly fire rating of the floor assembly shall be equal or greater than the hourly fire rating of the wall assembly.

2. **Shaft Wall Assembly** - The 2 hr fire rated gypsum board/stud wall assembly shall be constructed of the materials and in the manner described in the individual U400 or V400 Series Wall and Partition Design in the UL Fire Resistance Directory and shall include the following construction features:

- A. **Steel Floor and Ceiling Runners** - Floor runner U-shaped, sized to accommodate steel studs (Item 2B), fabricated from min 24 ga galv. steel. Legs are to be min 1/4 in. (6mm) longer than the maximum joint width. Runners attached to floor with steel fasteners located not greater than 2 in. from ends and not greater than 24 in. OC. The ceiling runners are provided with a fill, void or cavity material and are described in Item 3.

A1. **Light Gauge Framing* -- Slotted Ceiling Track** -- (Not Shown) - As an alternate to the Item 2A, a ceiling track consisting of galv steel channel with slotted flanges may be used when Item 3B.1 fill material is utilized. Slotted ceiling track sized to accommodate steel studs (Item 2B). Legs are to be min 1/4 in. (6mm) longer than the maximum joint width. Attached to concrete deck and spaced max 24 in. (610 mm) OC.

BRADY CONSTRUCTION INNOVATIONS INC, DBA SLIPTRACK SYSTEMS- SLP-TRK
CALIFORNIA EXPANDED METAL PRODUCTS CO - CST, CST 325
MARINO/WARE, DIV OF WARE INDUSTRIES INC - Type SLT

- B. **Studs** -- "C-T", "I", or "C-H" shaped steel studs to be min 2 1/2 in. (64 mm) wide and formed of min 24 ga galv steel. Studs cut 5/8 to 1 1/4 in (16 to 32 mm) less in length than assembly height with bottom nesting in and secured to floor runner. Steel studs secured to slotted leg of ceiling runner on finished side with No. 8 by 1/2 in. (13 mm) long wafer head steel screws at mid-height of exposed slot. Studs spaced max 24 in. (610 mm) OC.
- C. **Gypsum Board*** -- 1 in. (25 mm) thick by max 24 in. (610 mm) wide gypsum board liner panels. Panels cut 1 in. (25.4 mm) less in length than floor to ceiling height. Vertical edges inserted into "T" shaped section of "C-T" studs, into holding tabs of "I" studs or into "H"-shaped section of "C-H" studs.
- D. **Gypsum Board*** -- Gypsum board 1/2 or 5/8 in. (13 or 16 mm) thick, applied on finished side of wall as specified in the individual Wall and Partition Design. The boards cut a max 1 in. (25.4 mm) less in length than the floor to ceiling height. The screws attaching the gypsum board layer(s) to the "C-T", "I", or "C-H" studs shall be located between 4 and 5 in. (102 - 107 mm) down from ceiling surface.

TRIM-TEX
DRYWALL SOLUTIONS

Reproduced Courtesy of Underwriters Laboratories, Inc.
Created or Revised: December 5, 2022

Trim-Tex | P: (800) 874-2333 | F: (800) 644-0216 | www.trim-tex.com



Page 1 of 2

HW-D-0621

SYSTEM NO. HW-D-0621

CAN/ULC S115
Assembly Ratings - 1 and 2 Hr

Nominal Joint Width - See Chart, Section 3
Class II or III Movement Capabilities - See Chart, Section 3

L Rating at Ambient - 3.33 L/s/m
L Rating at 204°C - L/s/m

- E. Gypsum Board*** -- Gypsum board sheets installed to a min total 5/8 in. (16mm) or 1 1/4 in. (32 mm) thickness on each side of wall for 1 and 2 hr fire rated assemblies, respectively. Wall to be constructed as specified in the individual U400 or V400 Series Design in the UL Fire Resistance Directory except shaft side gypsum board overlaps intumescent strip and attached with typical steel fasteners to the ceiling runner (Item 3) of the lower level a min of 1/8 in. (3 mm).

The hourly fire rating of the joint system is equal to the hourly fire rating of the wall.

- 3. Joint System** - Max separation between bottom of floor and top of wall sheathing (non-shaft side) and gypsum board panels (shaft side) at time on installation is 5/8 in. (16 mm). The joint system is designed to accommodate a max 100 percent compression or extension from its installed width. When Item 3B.1 is used, the max nominal width is 1 in. (25 mm). When item 2A.1 is used, max nominal width is 3/4 in. (19 mm)

- A. Forming Material*** -- Min 2 in. (51 mm) thick min 4 pcf (64 kg/m³) mineral wool batt insulation cut to friction fit 33% compression in width and installed into ceiling runner between leg of track and gypsum liner board.

Item	Product	Max Gap	Movement
3B1	DDA (CEMCO)	5/8", 3/4", 1"	100% Comp; 100% Ext
3B2	HOTROD XL (CEMCO, MARINO/WARE)	3/4"	80% Comp; 30% Ext
3B3	HOTROD Type X (CEMCO, TRIM-TEX)	3/4"	80% Comp; 30% Ext
3B4	HOTROD Type X (CEMCO, TRIM-TEX)	1/2"	75% Comp; 25% Ext
3B5	FAS-093X (CEMCO)	1/2"	15%
3B5	FAS-093X-V (CEMCO, TRIM-TEX)	1/2"	15%
3B6	Fire Gasket 0.5 (CEMCO, MARINO/WARE, TRIM-TEX)	1/4"	100% Comp; 100% Ext
3B6	Fire Gasket 0.5 (CEMCO, MARINO/WARE, TRIM-TEX)	1/2"	100% Comp; 0% Ext
3B61	Fire Gasket 1 (CEMCO, MARINO/WARE, TRIM-TEX)	1/2"	100% Comp; 100% Ext
3B61	Fire Gasket 1 (CEMCO, MARINO/WARE, TRIM-TEX)	1"	100% Comp; 0% Ext
3B7	FireRip-Strap 6 (CEMCO)	5/8", 3/4", 1"	90% Comp; 100% Ext
3B7	FireRip-Strap 10 (CEMCO)	5/8", 3/4", 1"	90% Comp; 100% Ext

- C. Fill, Void or Cavity Material*** -- **Sealant** -- (Not Shown, optional) - Sealant may be used to seal any gaps above ceiling runner, and at butt joints in Fill, Void or Cavity Material, FireRip Strap (Item 3B7) to maintain L Ratings.

RECTORSEAL -- Metacaulk 1200, Biostop 750, FlameSafe FS3000, Metacaulk 1500, or Biostop 800 Spray.

*** Indicates such products shall bear the UL or cUL Certification Mark for jurisdictions employing the UL or cUL Certification (such as Canada), respectively.**

The appearance of a company's name or product in this database does not in itself assure that products so identified have been manufactured under UL's Follow-Up Service. Only those products bearing the UL Mark should be considered to be Certified and covered under UL's Follow-Up Service. Always look for the Mark on the product.

UL permits the reproduction on the material contained in the Online Certification Directory subject to the following conditions: 1. The Guide Information, Assemblies, Constructions, Designs, Systems, and/or Certifications (files) must be presented in their entirety and in a non-misleading manner, without any manipulation of the data (or drawings). 2. The statement "Reprinted from the Online Certifications Directory with permission from UL" must appear adjacent to the extracted material. In addition, the reprinted material must include a copyright notice in the following format: "© 2021 UL LLC"



Reproduced Courtesy of Underwriters Laboratories, Inc.
Created or Revised: December 5, 2022

Trim-Tex | P: (800) 874-2333 | F: (800) 644-0216 | www.trim-tex.com



Page 2 of 2

HW-D-0621